



# 5 Benefits of the Blue e+

over traditional enclosure cooling systems



The Blue e+ is a new generation of cooling units that deliver unparalleled energy efficiency with speed-regulated components and patented heat pipe technology.



## ENERGY EFFICIENCY

- ▶ Hybrid technology combines active, compressor-based cooling with a passive-cooling heat pipe. Using both active and passive cooling circuits provides greater energy efficiency and decreased electrical use.



## IoT INTERFACE

- ▶ IoT-enabled climate control can know the current and expected temperatures and adjust fans or other cooling accordingly. Blue e+ module or Blue e adapter enable data from cooling units and chillers to be used in IoT environments to provide centralized management, custom alerts, and better integration.



## LONGEVITY

- ▶ Thermal management protects sensitive components and extends their service life.
- ▶ Blue e+ ensures a more stable, constant temperature compared with traditional cooling systems.



## FLEXIBILITY



- ▶ Different applications require different power sources such as 115V, 230V, or 400/460V. Using inverter technology, Blue e+ air conditioners have multi-voltage capability allowing them to work with virtually any standard voltage.
- ▶ OEMs and distributors simplify inventory by needing to stock only one item.
- ▶ Logistics is also simplified by reducing the number of device variants and spare parts.
- ▶ The Blue e+ cooling units offer cooling capacities up to 6,000 watts and can be used in environments ranging from -20°C to +60°C.

## SIMPLICITY



- ▶ Standard cut-out sizes in enclosure doors and side panels make installation and service quick and simple.
- ▶ A secure and accessible USB interface allows for efficient diagnostics using monitoring software. The data is gathered at a glance, including temperature and efficiency and more for all operating units.
- ▶ A touch-screen display provides all relevant information.
- ▶ System messages appear as plain text and are multi-lingual.
- ▶ Standardized communication interfaces also ensure easy integration in a production plant's control system.





# 5 Benefits of the **Blue e+**

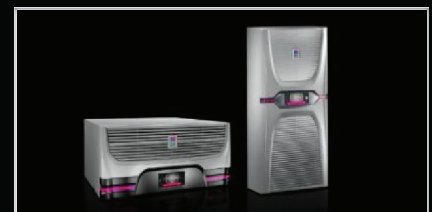
over traditional enclosure cooling systems



The Blue e+ is a new generation of cooling units that deliver unparalleled energy efficiency with speed-regulated components and patented heat pipe technology.

K+S Services has the ability to provide you with the best of the best Rittal Blue e+ systems.

Contact us for more information.



#### Climate Control

##### **Air Conditioners/Thermoelectric Coolers**

With cooling units, the temperature inside the enclosure is kept at a constant level independent of the ambient temperature. The air flow meets individual requirements. Due to two separate circuits, no dust penetrates into the enclosure.



#### Climate Control

##### **Climate Control Accessories**

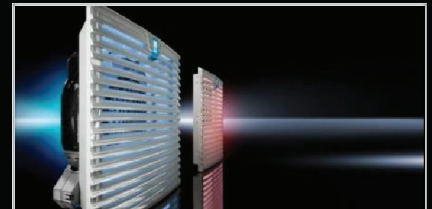
Perfectly coordinated components allow you to customize the climate control to your specific requirements. The efficiency and reliability of climate control components can be additionally enhanced with monitoring, control and individual routing.



#### Climate Control

##### **Heaters**

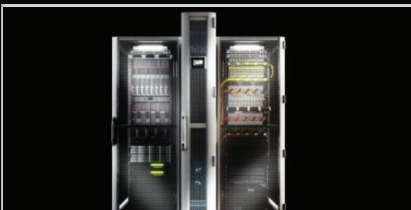
Heating systems ensure that the correct heating capacity is always available to avoid condensate formation, particularly when installed outside.



#### Climate Control

##### **Fans & Filter Fans/ Air to Air Heat Exchangers**

Ambient air cooling units are ideal for dissipating heating loads exceptionally cost-effectively. Condition: The ambient air must be relatively clean and at temperatures below the required enclosure internal temperature.



#### Climate Control

##### **IT Cooling Solutions**

Climate control concepts from Rittal cover the full spectrum of applications, from cooling a single rack through to entire data centers. In this case, the focus is on safety and efficiency.



#### Climate Control

##### **Liquid Cooling Packages/ Air to Water Heat Exchangers**

Efficient liquid cooling may be used in all situations where a high cooling load is required, such as process and machine cooling or when dissipating heat loss from enclosures via air/water heat exchangers.



#### Climate Control

##### **Outdoor Applications**

Function and safety - in any weather. Our outdoor air conditioning solutions are perfectly suited for outdoor use. Fan-and-filter units with hose-proof hoods, heaters and Blue e+ chillers with the corresponding "Outdoor" option may now be used in...