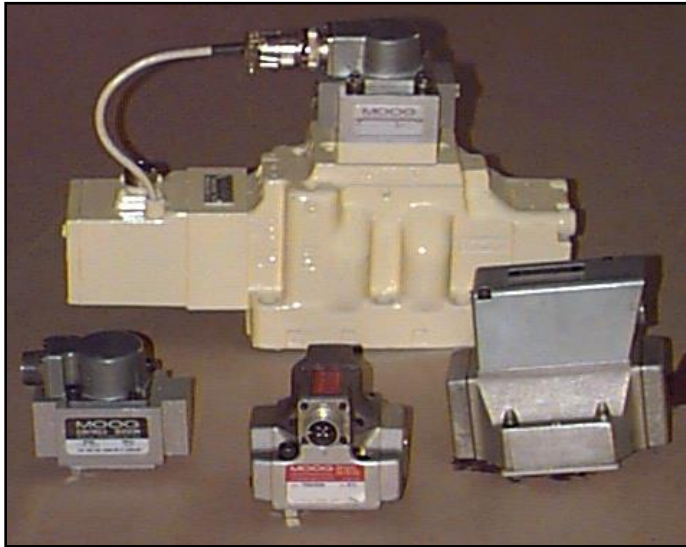


MOOG SERVO AND PROPORTIONAL VALVES

This picture shows a number of Moog valves. The valve in the background is a D600 series valve, front left is the 77 / 773 series, front center is the AO76 / 760 series, and front right is the 62 series valves. These are precision control valves with feedback capabilities. These valves are used to control a items like a cylinder, motor, or some type of rotary / linear actuator.



These can be found in the plastics, manufacturing, EDM, Structural Test, Flight Simulation, Power Generation, Die Casting, and just about any industry.