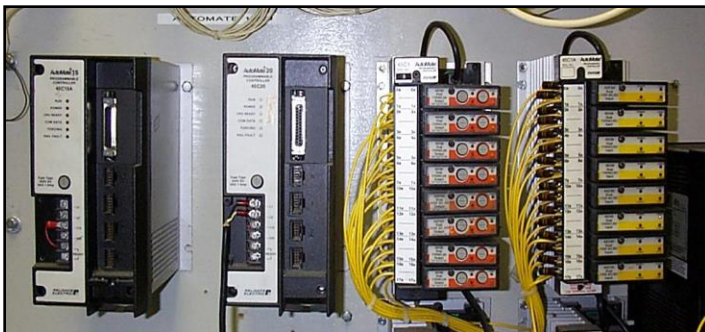


## RELIANCE AUTOMATE 15, 20, 30, 40

The new expansions were made to our existing AutoMate test stand. This test stand was completed by Shannon Hooker. The AutoMate is a small programmable logic controller. The AutoMate 15 & 20 are simple relay replacers with 4 function math and analog capabilities. They are compact with a built in power supply and I/O interface. The AutoMate 30 & 40 are modular but also boast ASCII, 3 levels of I/O, redundancy, and interrupt processing. Resource APX software and R-NET interface is used to communicate with other PLC's.

Our test stand consists of the following; An AutoMate 15 (45C15) and 20 (45C20), with 4-(45C1) I/O rails filled with 8-(45C60/45C66) ac outputs/contact outputs, 8-(45C40) ac inputs, 8-(45C63) 24Vdc outputs, and 8-(45C44) 24Vac/dc inputs. An AutoMate 40, with optional local I/O heads (45C22 & 61C22), remote I/O heads (45C37 & 45C38), In chassis I/O (45C364), and serial comm. processor (45C203). Our chassis (45C310), P.S. 20 amp (45C321), logic processor (45C400A), and control processor (45C410C).

The AutoMate family of PLC's are commonly found in tire pressing, beverage processing, cement processing, pharmaceutical, and pulp & paper processing.



AutoMate 15 & 20



AutoMate 30 & 40