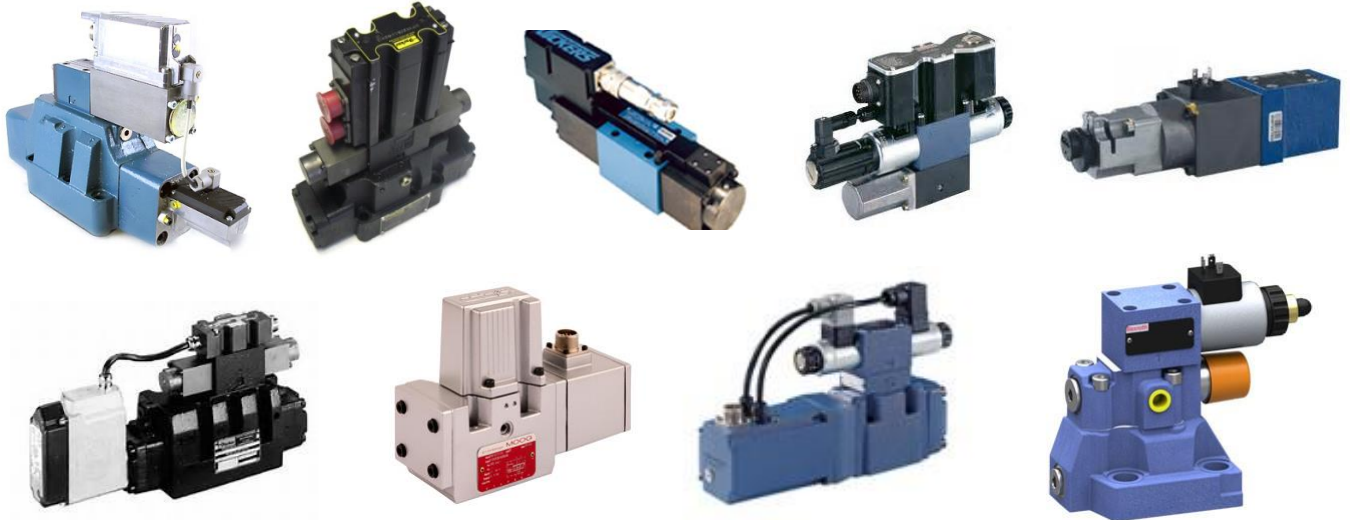


Proportional Valves

K+S Services has the capability to repair most current and obsolete Proportional Valves seen in the market place. These Proportional valves are fully tested and documented with computerized flow plot generation. Common Manufacturers' serviced: Vickers – Moog – Rexroth – Parker – Hydrolux - Bosch - Husky



List of Proportional Valves by Manufacture and Series

Bosch /Rexroth

4WRA, 4WRBA, 4WREE, 4WRP, 4WRPE, 4WRPEH, 4WRH, 4WRZE, 4WRKE, 4WRPH, 4WREQ, 4WRSE, 4WTRE, 4WRDE, 4WRSE3E, 4WREE, 4WRVE, 4WRLE, 5WRPE, DREB, 3DREP

Moog/Hydrolux

641, 642, D633, D634, D644, D660, D661, D662, D663, D664, D665, D791, D792, D680, D681, D682, D684, D685, D688, D691, SE4, SE4E, WEP, WSH

Parker

D1FHE, D1FLE, D1FME, D1FTE, D1FVE, D1FXE, D31FHA, D31FHB, D31FHE, D31FLE, D3FHE, D3FME, D3FPE, D3FTE, D3FXE, D41FHA, D41FHB, D41FHE, D41FLE, D41FTB, D41FTE, D81FHB, D81FHE, D91FHB, D91FHE, D91FLE, RE06, TDA

Vickers

EHST-10, EHST-11, EHST-30, EHST-40, KACG, KADG4, KADG5, KAFDG4, KAFDG5, KAFTG, KAHDFG, KAHDG, KASDG, KATDG, KBDG4, KBDG5, KBFTG, KBDG, KBHDG, KBSDG, KCG, KDG, KDG4, KDG5, KFDG4, KFDG5, KFTG, KHDG, KSDG, KSDG, KTG