



# SINGLE POINT LESSON - (ORANGE - PROFESSIONAL MAINTENANCE)

☐ Basic Knowledge

☐ Improvement

☒ Problem Awareness

www.k-and-s.com

Plant- KTP

Dept.

ALL

STATION: ALL

BAY: ALL

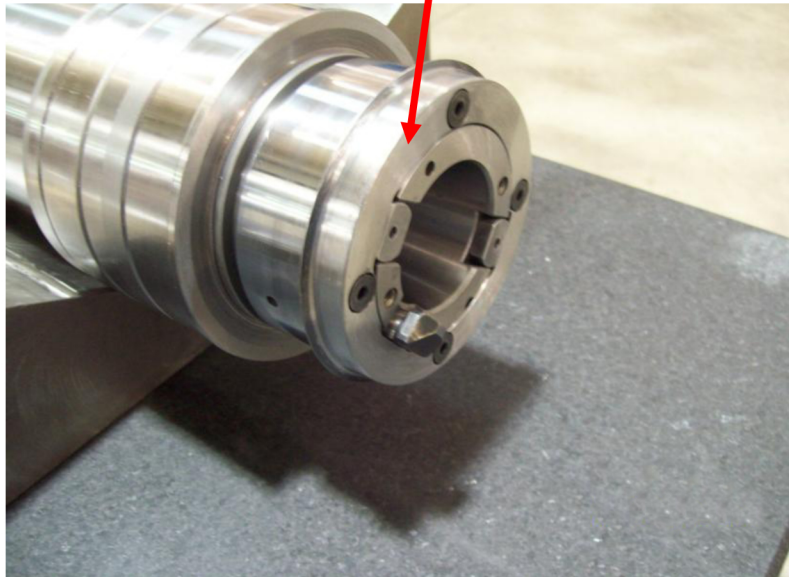
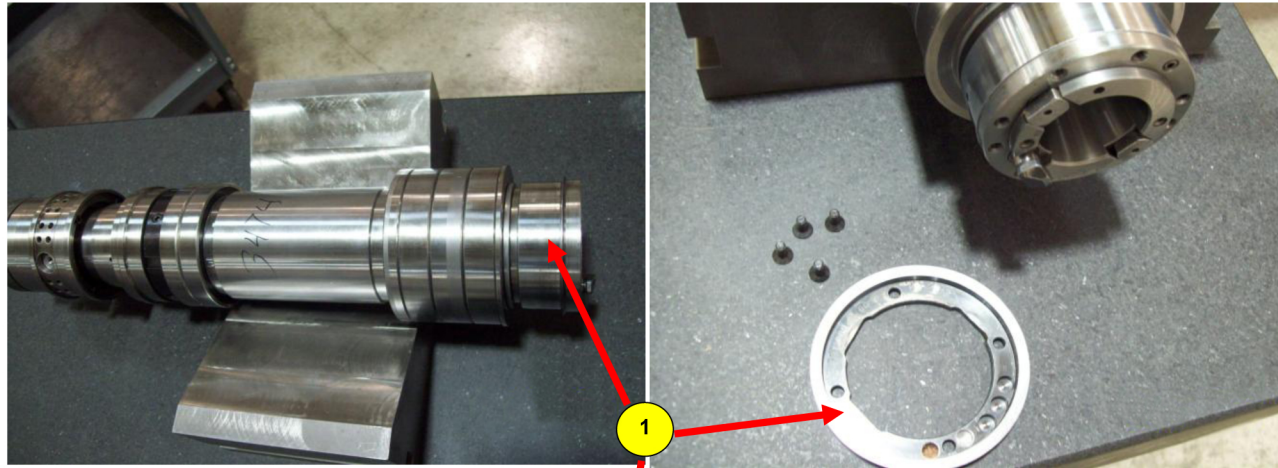
COMPLETED BY:

Doc #

## Chiron Spindle Cap Installation - Critical Balance Function

Model:

Date



### HOW

Each Chiron Spindle is precision balanced. Material on the inside diameter of the cap may be removed to achieve balance. This cap is pointed out by arrow #1. When installing each spindle the cap that came in with the spindle must remain with the same spindle.

### WHY

When a spindle is installed the cap must be removed. Once the spindle is installed the cap is placed back on the spindle. If a different cap is replaced the spindle will be out of balance and excessive vibration will occur.