



- SOUTHGATE, MI
- TAYLOR, MI
- KOKOMO, IN
- LAWTON, OK
- ROCKY HILL, CT
- OAKVILLE, ON
- MONTREAL, QC
- SALAMANCA, MX
- APODACA, MX
- TAMWORTH, UK
- NAPAJEDLA, CZ
- SINT – TRUIDEN, BE
- OŚWIĘCIM, PL

## Toyopuc PLC Product Capabilities

K+S has complete testing and repair capabilities of the Toyopuc- PC1/2/3 series of programmable controllers. Test routines have been written, and are fully exercised to test each and every function possible on the various modules. Many of the modules are complementary to several of K+S's robots. This live dynamic testing ensures a positive repair outcome. In many places where production process control is required, the Toyopuc with its five types of LAN (local area network) is probably behind the scenes.

### Various Toyopuc Modules:

- IN-12 Input                    THK-2750
- OUT-18 Output                THK-2753
- 2 Port M-Net                    THU-5093
- 2 Port PC Link                THU-2927
- Ethernet                        THU-5296
- Power Module                 THV-2748
- F2 I/O unit                      TFU2586
- Ma1ka-c Motion Control Module
- 128 URT 2



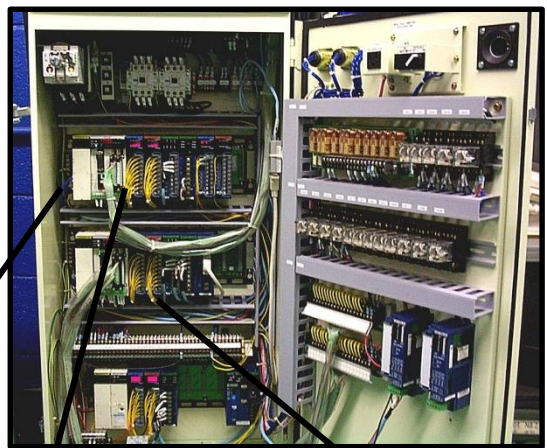
IDEC Monitor Touchscreen Control Panel



PC1 TPC-2060 with Integrated I/O Monitor Panel



(Expanded view of PC3JD)



PC3JD...TIC-5642 Processor

PC2J.....THC-2764 Processor

**ALL UNITS ARE SYSTEM TESTED**

**\*12 MONTH IN-SERVICE WARRANTY**  
Unless otherwise stated at time of quotation

**\*NO CHARGE EVALUATION**  
Priority repair orders may incur in evaluation fee