



**Quality Repair of Manufacturing Equipment**

*Don't see what you are looking for? Give Us A Call!*

ISO 9001:2008 Registered

1-800-542-1331

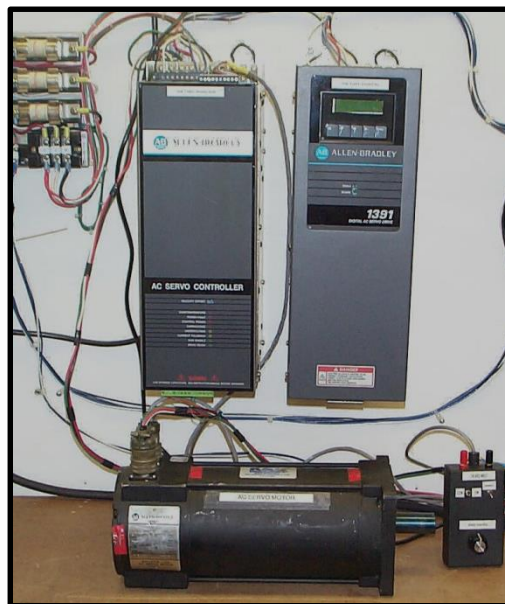
sales@k-and-s.com

www.k-and-s.com

SOUTHGATE, MI ● TAYLOR, MI ● KOKOMO, IN ● LAWTON, OK ● ROCKY HILL, CT ● OAKVILLE, ON ● MONTREAL, QC ●  
SALAMANCA, MX ● APODACA, MX ● TAMWORTH, UK ● NAPAJEDLA, CZ ● SINT – TRUIDEN, BE ● OŚWIĘCIM, PL

## Allen Bradley 1391 AC Servo Control Systems

These are the Allen Bradley 1391 ES & 1391 DES AC servo systems. They are commonly found in many industrial positioning applications. Each 1391 system contains the “Quad AB” encoder option board. The testing and diagnostic station for these servo drives is set up to provide a full range of dynamic variables that will cause any servo drive that is out of specification to fail. The 1391 system run, load, braking, ramp acceleration / deceleration & final positioning characteristics are all scrutinized. All AB 1391 AC servo drive repairs are closed loop tested to ensure a consistent quality repaired product!



**ALL UNITS ARE SYSTEM TESTED**

**\*12 MONTH IN-SERVICE WARRANTY**

Unless otherwise stated at time of quotation

**\*NO CHARGE EVALUATION**

Priority repair orders may incur in evaluation fee