



**Quality Repair of Manufacturing Equipment**

*Don't see what you are looking for? Give Us A Call!*

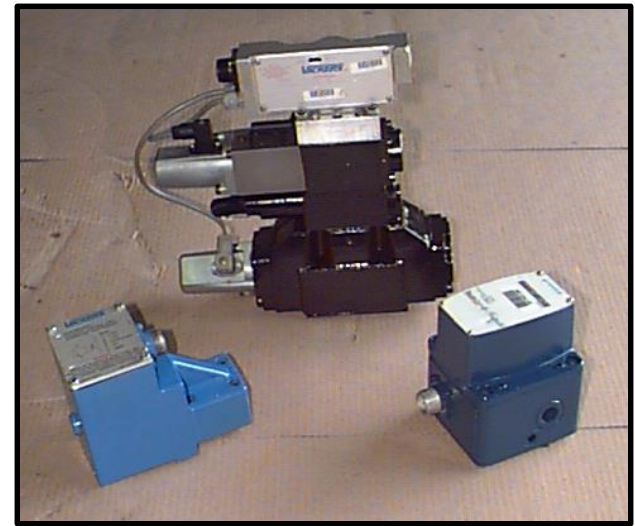


ISO 9001:2015 Registered  
1-800-542-1331  
sales@k-and-s.com  
www.k-and-s.com

- SOUTHGATE, MI
- TAYLOR, MI
- KOKOMO, IN
- LAWTON, OK
- ROCKY HILL, CT
- OAKVILLE, ON
- MONTREAL, QC
- SALAMANCA, MX
- APODACA, MX
- TAMWORTH, UK
- NAPAJEDLA, CZ
- SINT – TRUIDEN, BE
- OŚWIĘCIM, PL

## VICKERS PROPORTIONAL CONTROL VALVES

These are Vickers proportional flow and control valves. They are not servo valves however, they are doing basically the same function. The large valve in the background is a KAHDG5V series proportional valve. This valve differs from a normal servo valve because it has “on-board” electronics and LVDT positioning. The valve in the left front position is an EHST series flow control valve with integrated electronics. The valve in the right front position is an FGE series valve. It is similar to the EHST in the fact that they both control flow however, the FGE is an electronic relief valve.



**ALL UNITS ARE SYSTEM TESTED**

**\*12 MONTH IN-SERVICE WARRANTY**  
Unless otherwise stated at time of quotation

**\*NO CHARGE EVALUATION**  
Priority repair orders may incur in evaluation fee