



**Quality Repair of Manufacturing Equipment**

*Don't see what you are looking for? Give Us A Call!*

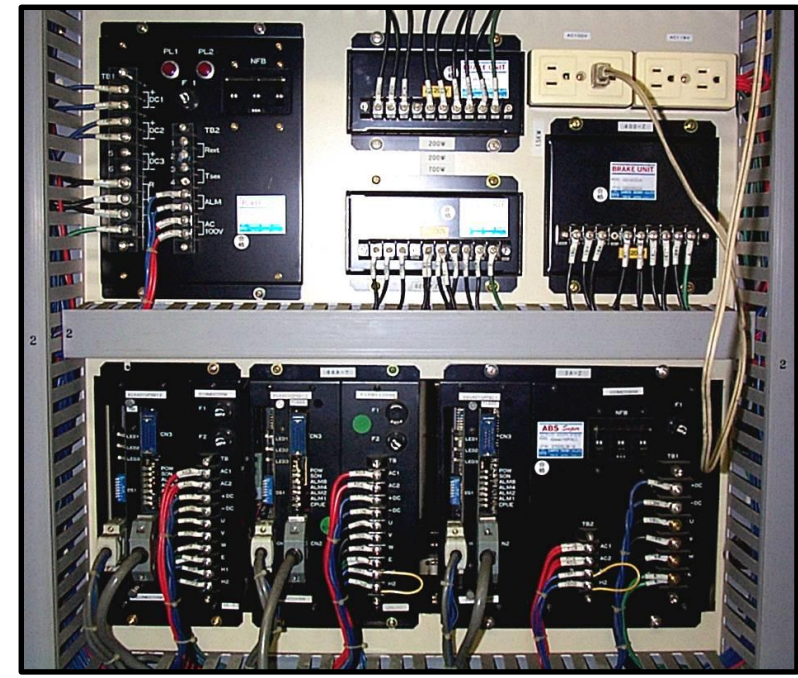
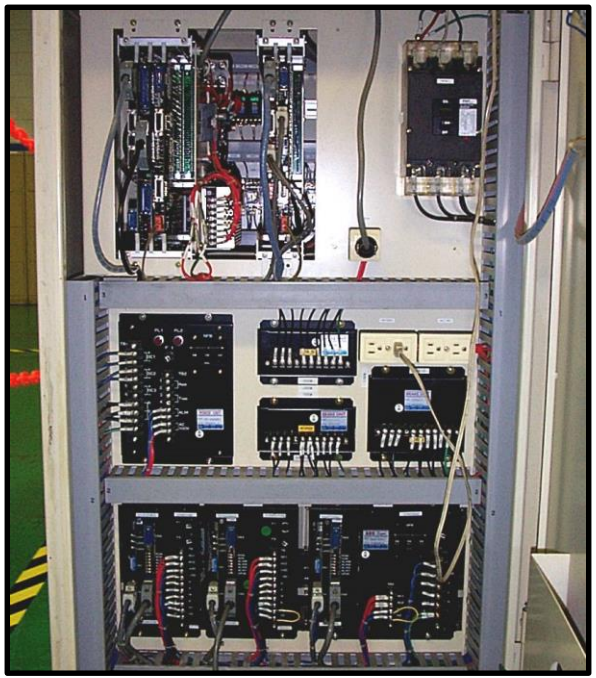


ISO 9001:2015 Registered  
1-800-542-1331  
sales@k-and-s.com  
www.k-and-s.com

- SOUTHGATE, MI
- TAYLOR, MI
- KOKOMO, IN
- LAWTON, OK
- ROCKY HILL, CT
- OAKVILLE, ON
- MONTREAL, QC
- SALAMANCA, MX
- APODACA, MX
- TAMWORTH, UK
- NAPAJEDLA, CZ
- SINT – TRUIDEN, BE
- OŚWIĘCIM, PL

## Nissan / Sanyo Denki AC Servo Test System

This is the Nissan / Sanyo Denki AC servo test system. At the heart of this system is the Nissan designed “NC Locator” numerical control system. This NC Locator controller provides all the control features necessary for full system run / load testing of Sanyo Denki ABS resolver type servo motors. The system offers a wide range of dynamic Sanyo Denki motor testing capabilities with three servo drives ranging from 200W, 700W and 1500W. This system is designed to run test Sanyo Denki AC servo motors utilizing absolute (ABS) resolver feedbacks.



Power Supply, Servo Amps & Brake Units

**ALL UNITS ARE SYSTEM TESTED**

**\*12 MONTH IN-SERVICE WARRANTY**  
Unless otherwise stated at time of quotation

**\*NO CHARGE EVALUATION**  
Priority repair orders may incur in evaluation fee