

Quality Repair of Manufacturing Equipment

Don't see what you are looking for? Give Us A Call!

SOUTHGATE, MI

TAYLOR, MI

KOKOMO, IN

LAWTON, OK

ROCKY HILL, CT

OAKVILLE, ON

MONTREAL, QC

SALAMANCA, MX

APODACA, MX

TAMWORTH, UK

NAPAJEDLA, CZ

SINT - TRUIDEN, BE

OŚWIĘCIM, PL

PRECISION SPINDLE & PARABOLIC ROLL REPAIR

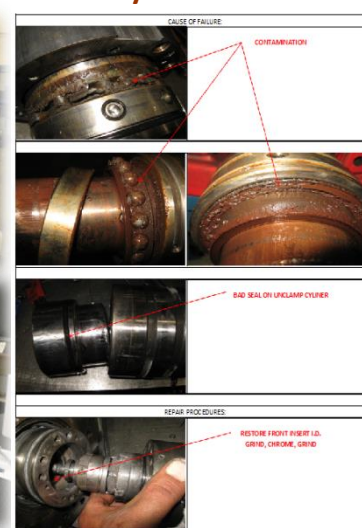
With over 30 years of experience along with our state of the art spindle repair lab allows our technicians the ability to perform all aspects of spindle remanufacturing to guarantee Quality repairs. Our in-house capabilities to perform machining, motor rewinding and feedback repair ensures the highest quality while controlling costs and delivery time. Upon receipt of your spindle, it will go under an extensive evaluation process to determine exact cause of failure. Each quote will have a detailed failure analysis report for your review and upon your approval, your spindle will be completely rebuilt & recalibrated in one of our class 10,000 HEPA climate controlled clean rooms. Every spindle will be dynamically balanced and tested to allow for proper run in.

Top Manufacturers We Support Bryant, Chiron, Colonial, Cincinnati, Gamfior, GMN, Heald, Hessap, Hurco, Kessler, Makino, Mazak, Mitsubishi, Mori Seiki, OKK, Okuma/Howa, Omlat, Pope, Setco, Studer, Toyoda and many more!

Spindles are Balanced on CEMB Precision Balancers to a GO.4 Standard



Teardown & Evaluation Are Fully Documented



Page 2 of 4

All aspects of the spindle are monitored for critical run out with vibration & temperature measured at maximum RPM's. Videos are taken for each spindle during final test.

Micro-Finishing Parabolic Rolls



We also have the capabilities to restore and build new Parabolic Rolls used in micro-polishing machines made by Thielenhouse, Supfina/Taft, Pierce & Impco. Our unique grinding fixtures enables us to restore/build the rolls' parabolic forms to factory specifications.

ALL UNITS ARE SYSTEM TESTED

***12 MONTH IN-SERVICE WARRANTY**

Unless otherwise stated at time of quotation

***NO CHARGE EVALUATION**

An evaluation fee may apply for priority repairs

RF: FALL11